

The OmniPro II Controller

The OmniPro II is the flagship security & automation controller. Designed for large residential and commercial installations, the OmniPro II provides enhanced comfort, safety, convenience, and energy savings by coordinating audio/video, lighting, heating and air, security, scenes, and messaging based on activities and schedules.

Safety & Security

OmniPro II controllers are UL Listed, CP-01 compliant security and fire systems for residential installations and UL Listed for security in commercial installations. They detect intrusion, smoke and fire, carbon monoxide, water, vehicles, motion, and other hazards with wired or wireless sensors.

Security zones are fully configurable and expandable. You may set the validity of user codes by time and authority. Security codes for the nanny, housekeeper, or contractor can be set by specific times. The OmniPro II supervises zones, battery, and bell circuits. Additionally, the OmniPro II permits true partitioning for security and control.

Leviton provides a line of supervised wireless security products which include motion and glassbreak detectors. Also available are wireless handheld remotes for control of many automation and security functions.

Surveillance

Add cameras to the OmniPro II system to view and/or record a nursery, pool area, or entrance. Automatically display live video on a Touchscreen or when the doorbell rings. View live or recorded video remotely online or from a mobile device such as a smartphone. Activate video to record when an alarm trips, and even send an alert to a cell phone or e-mail.

Access Control

Leviton's Access Control products limit admission to designated areas. Swiping an access reader with an access card or keytag can accomplish multiple functions such as

arming/disarming security, activating a door strike to open a door, turning on select lighting, and even playing a music source.

Lighting Control

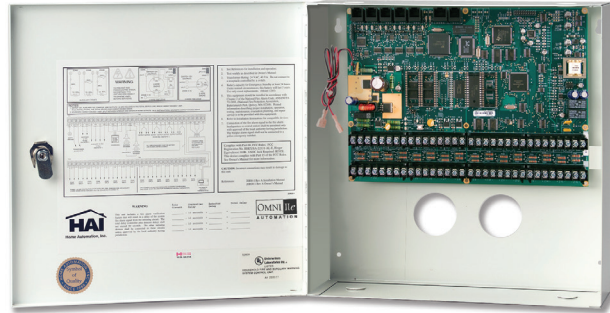
The OmniPro II can control lighting by schedule, motion detection, door openings, sunrise, sunset, alarm activation, and more. This advanced system provides the benefits of a sophisticated lighting control by setting scenes, fades, and dimming levels.

OmniPro II controllers have an astronomical clock and automatically adjust for daylight savings time in order to provide accurate dusk to dawn lighting control.

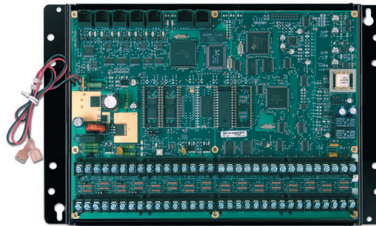
Energy Management

The OmniPro II system can manage your HVAC system through Omnistat2 Programmable Communicating Thermostats (PCTs). Use schedule or activity settings such as home, asleep, away, room occupancy, outdoor temperature, etc. Temperature sensors allow for setpoint-based programming of events in your OmniPro II. Setpoints can signal when to activate programs for controlling temperatures in attics, garages, greenhouses, basements, wine cellars, or coolers. ZigBee devices go further to control the power consumption for high wattage

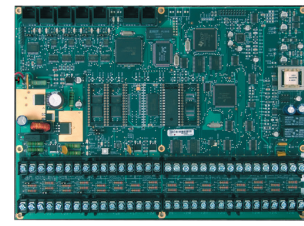
loads such as pool pumps and hot water heaters. LCMs also control fountains, ceiling/attic fans, fluorescent lights, motors, and exterior lights.



20A00-2 OmniPro II with enclosure



20A00-8 OmniPro II on mounting plate for Structured Wiring Enclosures



20A00-21 OmniPro II - Board Only

FEATURES

UL Listed, CP-01 compliant security and residential fire system
UL Listed for security in commercial installations.
Detects intrusion, smoke and fire, carbon monoxide, water, and other hazards via wired or wireless sensors
Built-in digital communicator for use with a central station
Dials up to eight additional phone numbers for voice notification
Utilizes IP-based Touchscreens (OmniTouch 7)
Access remotely via phone, computer, or mobile device

Technical Data Sheet

OmniPro II Controller

20A00-2 / 20A00-8 / 20A00-21



Entertainment

Interface the OmniPro II with a Hi-Fi 2 multi-room audio system or other audio distribution system from a Connectivity Partner including NuVo, Proficient, Russound, SpeakerCraft, and Xantech. The OmniPro II can control on/off, volume, muting, audio source, and many other functions for each audio zone.

The OmniPro II connects to Leviton's Home Theater Extender (HTX). Automate equipment based on schedule or push one button on your phone or Touchscreen to activate appropriate A/V equipment, lower a projection screen, close the window coverings, adjust the temperature, dim the lights, and lock all doors.

Interface Options

Add additional interface options, such as an in-wall OmniTouch Touchscreen. These colorful, easy-to-use Touchscreens allow complete control of a Leviton automation system. An OmniPro II installation must include at least one Omni Console in order to meet UL requirements. The OmniPro II may be controlled remotely from a PC, laptop, tablet, smartphone, or e-Reader. Choose from one of Leviton's award-winning software or app options to provide Internet access and control. ■

LANGUAGES		CODES
English	● ● ●	-
Latin American Spanish	● ● ●	SPA
European Spanish	● ●	SPE
Catalan	● ●	CAT
Italian	● ●	IT
French	● ●	FR
Traditional Chinese	● ●	CHT
Simplified Chinese	● ●	CHS
Arabic	● ●	AR
German	● ●	GER
Hebrew	● ●	HE
Portuguese	● ●	POR
Russian	● ●	RU

- Controller In Enclosure 20A00-2(CODE)
- Controller Board Only 20A00-21(CODE)
- Controller For Structured Wiring 20A00-8(CODE)

SPECIFICATIONS

HLC Lighting/Rooms	31
Lighting Scenes	128
Lighting Addresses	256
Zones	16
Zone Expansion Total	176
2 Wire Smoke Loops	4
4 Wire Smoke Loops	176
Thermostats	64
Consoles (Keypads)*	16
IP Touchscreens: OmniTouch 7 / OmniTouchPro	16
12 Volt Triggers (w/ expansions)	8 (136)
Audio Control	Hi-Fi/Conn.Prtnrs
Access Control Card Readers	16
Access Control Card/Keytag	99
Serial Ports	5
Serial Expansion Total	6
Ethernet Port	Yes
Flash Memory	Yes
User Codes	99
Programming Lines	1500
Vocabulary	550
Custom Vocabulary	Yes
Depluggable Terminal Strips	Yes
Format	Contact ID, 4/2,3/1
Transformer Required	24V (40VA)
Battery (Typical)	12V (7 Ah)
Aux Current Max	1A
Bell Current Max	1A
Total Expansion Boards (10A06-1)	2
Total Expansion Enclosures (17A00-X) / Wireless Receivers (45A00-1/42A00-1)**	8
110V/220V/240V	Yes
UL Listing	Res. Burglar & Fire/Comm. Burg
Warranty	3 years

* Systems must have one console to meet UL requirements.

** Each wireless receiver can support 64 transmitters which can report to 16, 32, 48, or 64 zones depending on your setup. Each group of 16 zones counts as one Expansion Enclosure.

Technical Data Sheet

OmniPro II Controller

20A00-2 / 20A00-8 / 20A00-21



Controller - In Enclosure

13.25" W x 13.375" H x 4.625" D
Approximate Weight: 13.30 lbs

Controller - Board Only

11.0" W x 8.0" H x 1.25" D
Approximate Weight: 1.6 lbs

SERIAL PORTS

HLC Lighting Control UPB PIM (#36A00-1)
Leviton Vizia RF + Z-Wave (#VRCOP)
ZigBee (#81A00-3)
Omni-Bus (#117A00-1)
Serial to PC Cable (#21A05-2)
Hi-Fi 2 (#95A00)
Access Control Readers (#75A00, #54A00)
Clipsal, Dynalite, Coolmaster, Serial Connectivity
Cable (#36A05-4)

AUDIO

Omni Console w/ Spkr/Mic (#33A00-4)
Surface Speaker/Mic (#28A00-1)
Flush Speaker/Mic (#28A00-2)
Two-Way Voice Module (#10A11-1)

ETHERNET PORT

Snap-Link, Snap-Link Mobile
for Android and iOS, PC Access, OmniTouch
Touchscreen, OmniTouch Pro, Omni-Bus

12V BATTERY

EARTH GROUND

TRANSFORMER 24V/40VA

Two-Way X-10

TELEPHONE INTERFACE

- Land line
- Cellular Communications Center (#70A00)
- PC Access

USER INTERFACE

Omni Consoles (#33A00)

EXPANSION

Wireless Receiver (#45A00-1)
Wireless Receiver for GE (#42A00-2)
Expansion Enclosure (#17A00)

SECURITY & ENERGY MANAGEMENT

Temperature Sensor (#31A00-7)
Temperature/Humidity Sensor (#31A00-8)
Standard Security/Fire/Environmental
Sensors

COMFORT & CONVENIENCE

Omnistat2 Thermostats

Visio stencils are available to our dealers.
Omni systems are designed for professional installation.
Licensing requirements vary by area.



California
Title 24
Compliant

CP-01
Compliant

Technical Data Sheet
OmniPro II Controller
20A00-2 / 20A00-8 / 20A00-21



20A00-2	OmniPro II Controller OmniPro II home control system with enclosure, lock set with two keys, UPB™ PIM, RJ31X cord and jack, and manuals. Foreign language versions: Arabic (AR), Catalan (CAT), Simplified Chinese (CHS), Traditional Chinese (CHT), French (FR), German (GER), Hebrew (HE), Italian (IT), Portuguese (POR), Russian (RU), Latin American Spanish (SPA), and European Spanish (SPE).
20A00-21	OmniPro II Board Only Foreign language versions: Arabic (AR), Catalan (CAT), Simplified Chinese (CHS), Traditional Chinese (CHT), French (FR), German (GER), Hebrew (HE), Italian (IT), Portuguese (POR), Russian (RU), Latin American Spanish (SPA), and European Spanish (SPE).
20A00-8	OmniPro II Controller for Structured Wiring Enclosures OmniPro II controller on structured wiring enclosure mounting plate, UPB™ PIM, RJ31X cord and jack, manuals, accessory kit, and a wiring diagram for the enclosure door. Foreign language versions: Arabic (AR), Catalan (CAT), Simplified Chinese (CHS), Traditional Chinese (CHT), French (FR), German (GER), Hebrew (HE), Italian (IT), Portuguese (POR), Russian (RU), Latin American Spanish (SPA), and European Spanish (SPE).

Leviton Manufacturing Co., Inc. Security & Automation

4330 Michoud Blvd, New Orleans, LA, 70129
Telephone: 1-800-229-7256 • Fax: 1-800-253-2955
Tech Line: 504-736-9810 x 1

Visit our Website at: www.leviton.com

© 2013 Leviton Manufacturing Co., Inc. All rights reserved.