

TOUCH

2 WIRE INTERCOM SYSTEM

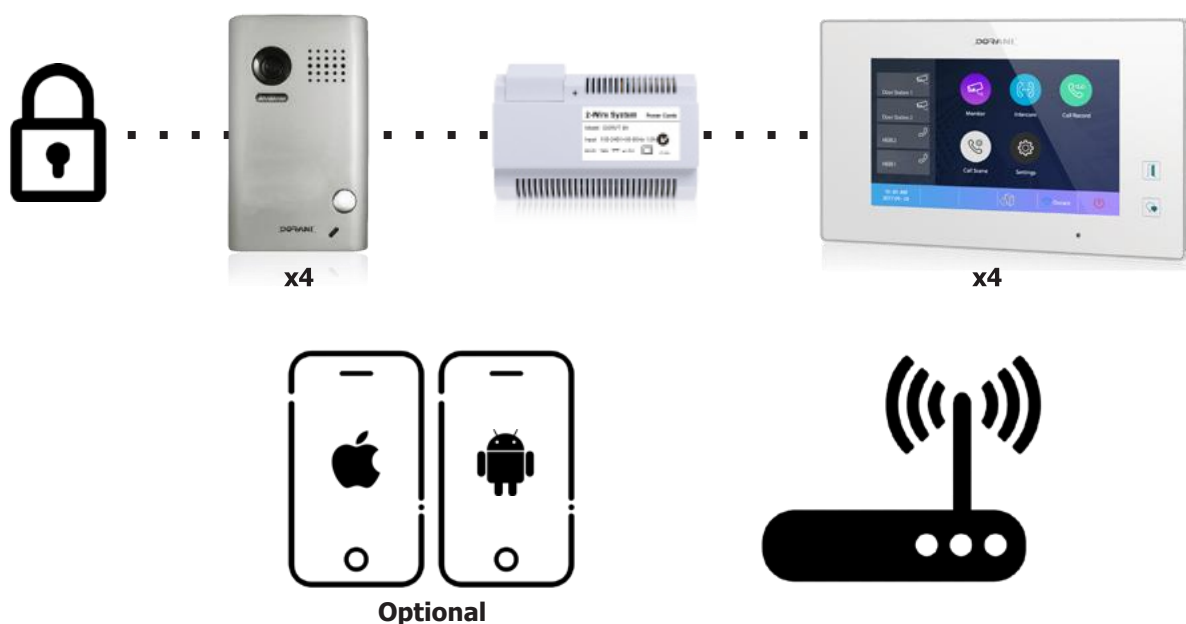


KEY FEATURES

- 2 Wire Connectivity
- 7" Touch Screen
- Picture Memory
- 4 Monitor capability + 4 Door capability
- Internal Call and Paging Functionality
- Keypad and Standard Door Stations
- Great for Upgrades
- 2 Door Release Capability
- Power OR Relay Output from Door Station
- 170 Degree Wide Angle Lens on DORVT13, 14, 25
- 105 Degree Lens DORVT11,12
- Optional Diversion with WiFi connection to internet*
- QR Code connection to MobileDevice*
- Adjustable Diversion methods*
- Lock release from mobile device*
- Intercom to your mobile*
- Free IOS and AndroidApp*

*Please consult your installer in relation to the optional diversion feature and functionality. More information available overleaf and at T&C's at Dorani.com.au

BASIC OPERATION



ITEM NUMBERS

DORVT20	Surface Mount Touch Kit	DORVT11	Surface mount Door Station
DORVT20KP	Surface Mounted Keypad Kit	DORVT12	Flush Mount Door Station
DORVT21	Flush Mounted Touch Kit	DORVT13	Surface Mounted Keypad Door Station
DORVT21KP	Flush Mounted Keypad Kit	DORVT14	Flush Mounted Keypad Door Station
DORVT20S	Slimline Door Touch Kit	DORVT25	Slimline Door Station
DORVT22	Master Monitor ONLY (1 per system)	DORVT04	Additional Door/Monitor Module
DORVT03	Additional Sub Monitor	DORVT15	Second Lock Release Module

Important Information regarding diversion (optional feature)

- The Intercom system can work as a stand alone intercom with no requirement for Wi-Fi connection and Mobile App service.
- Proceeding with the optional diversion feature is accepting Dorani diversions disclaimer and terms and conditions available at dorani.com.au
- Speeds greater than 1.2 Mbps upload are recommended for quality and reliability at the monitor
- Many ISP providers restrict some activity within router/modems; an IT specialist may be required to unlock these restrictions. This may fall outside a standard installation.
- Dorani bears no responsibility for connection problems based on 3rd party equipment.